



THE AMERICAN INSTITUTE OF ARCHITECTS
CUSTOM RESIDENTIAL ARCHITECTS NETWORK

Houses for all Regions

CRAN Residential Collection



images
Publishing

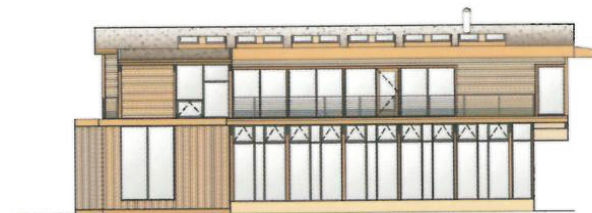
Hudson Valley, New York State

The Hudson Valley Country House is a daring double-footprint project that is defined by its public and private spheres, oversized windows, and multiple terraces. The house is a response to an extensive and dynamic program that began with a kit, brought to this rocky, wooded plot in custom-designed prefabricated parts, bolted together and, once finally assembled, clad in an envelope of soft wood panels so that modern and rustic were at one. A mostly open-plan ground floor offers a kitchen, dining and living area, and a grand 9-meter (30 feet) indoor pool with woodland views to create a single merged space as inviting in winter as it is in summer. When designing the home, architect Ulises Liceaga was very interested in the play of lines, inside and out. At the same time, he was deeply inspired by artist Diego Rivera and Frida Kahlo's artist studio back in his hometown of Mexico City—a major cultural landmark built in 1930. The studio, and very much the relationship of the two artists, was both connected, yet still apart. The footbridge consists of a single tilted stanchion and cables that suspend the walkway; it takes its inspiration from the angles, orientation, and axis of the main building to which it leads.

When designing the house, Liceaga had an ecological responsibility in mind. Among the strategies proposed to economize without compromise, he used “reclaimed” materials wherever possible: for example, all the closets were built from retail display furniture bought as scrap from a dismantled Virgin Records store in Manhattan. Salvaged theater light fixtures were refurbished and incorporated into a custom lighting system for the entire house. Continuing in the same fashion, most of the furniture for the house came from refurbished old family heirlooms. Century-old chairs were tactfully refinished and reupholstered to respectfully dialog with the “country-modern” typology of the Hudson Valley dwelling. Most of the home's bright colors are confined to the private areas, whereas the earth tones and subdued metallic hues characterize the public realm. The exterior is cedar cladding with ipe timber on the bridge and all the decks—ipe is one of the hardest and most durable timbers available.

In addition to using reclaimed materials throughout, to further strengthen the environmentally responsive design, the pool was designed to eschew chlorine and other chemical cleansers in favor of the ozone filtration system.





East elevation



South elevation



West elevation



North elevation

0 10ft



